

# ***Asceles margaritatus* Redtenbacher, a phasmid from Borneo with two distinct wing lengths**

P.E. Bragg, 8 The Lane, Aysworth, Nottinghamshire, NG16 2QP, U.K.

## **Abstract**

*Asceles margaritatus* Redtenbacher, 1908 is a very common phasmid in Borneo. The usual form has full length wings but there is a distinct form on Mt Kinabalu, Sabah, which has short wings. Both forms are illustrated and new distribution data is given for the typical form.

## **Key words**

Phasmida, *Asceles margaritatus*, distribution, variable wing length.

## **Introduction**

The phasmid *Asceles margaritatus* Redtenbacher, 1908 usually has fully formed wings. However, there is a short winged form which occurs in Kinabalu National Park, in the area around the Park HQ, this was first recorded by Hausleithner (1991: 222, fig 3, ♂) and was cultured by myself for five generations in the early 1990s as PSG culture 151 (Bragg, 1995). Hausleithner illustrated the male of the micropterous form (1991: fig. 3); Redtenbacher (1908: figs. 25.6a & 25.6b) and I (Bragg, 2001: figs. 215a, 215b) have illustrated the male and female of the macropterous form; Sellick (1993: fig. 1) and I (Bragg, 2001: figs. 215c-e) have illustrated the egg of the macropterous form. Adult males and females of both forms are illustrated here for comparison. Some new localities are listed for this species, based on my own collecting in 2001 and the collection at the Forest Research Centre, Sepilok, Sabah (FRCS). In the following list "n" indicates a nymph for which the sex was not recorded.

## **New records**

### **A) Macropterous form**

SABAH, Tawai Forest Reserve. 8♂♂, 3♀, 4n (FRCS) Entomology Staff, vi-vii.1994; ♂, ♀ (FRCS) Entomology Staff, 1-13.ix.1994.

SABAH, Sepilok Laut. 1♂ (FRCS) Entomology Staff, ix.1992; 6♀♀, 2♂♂, 1n (FRCS) Entomology Staff, xii.1992; 5♂♂, 3♀♀, 3n (FRCS) Entomology Staff, iii.1994.

SABAH, Sepilok. 1♂ (FRCS) Entomology Staff, 26.xi.1977; 1♂ (FRCS) M. Anzai, 17.ii.1991; 1♀ (FRCS) F. Seow-Choen, C.L. Chan & Arthur Chung, 17.vi.1994.

SABAH, Sukau. 1♂, 1n (FRCS) C. Prudent, 18.iv.1994.

SABAH, Ranau, Marakau. 1♂, 1♀, 2n (FRCS) Entomology Staff, i.1994.

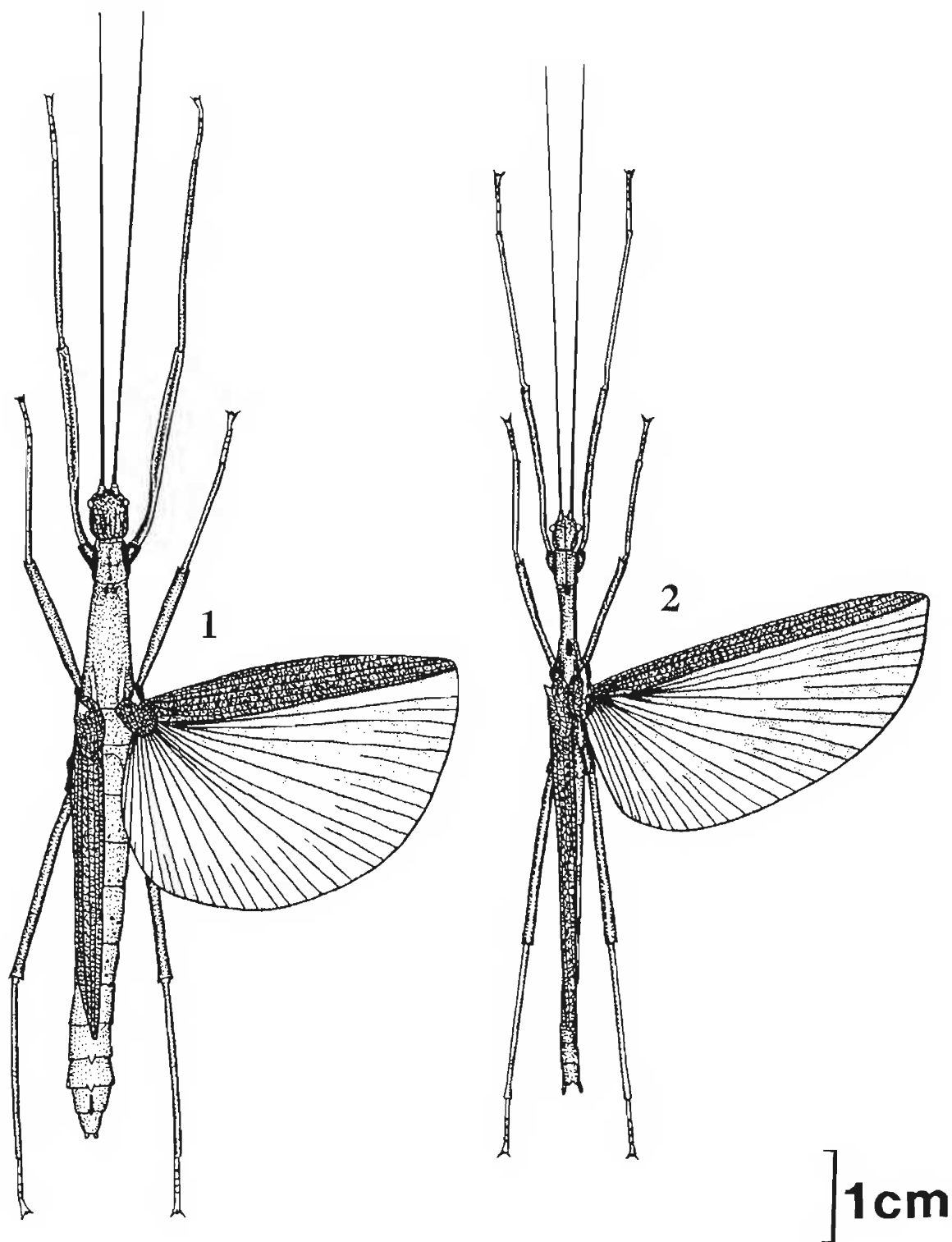
SABAH, near Babaggon, N005 54' 22" E116 10' 16", altitude 96m. 1♀ (PEB-3076), 1♂ (PEB-3077) P.E. Bragg, 30.vii.2001; 1♂ (PEB-3078) P.E. Bragg, 13.viii.2001.

### **B) Micropterous form**

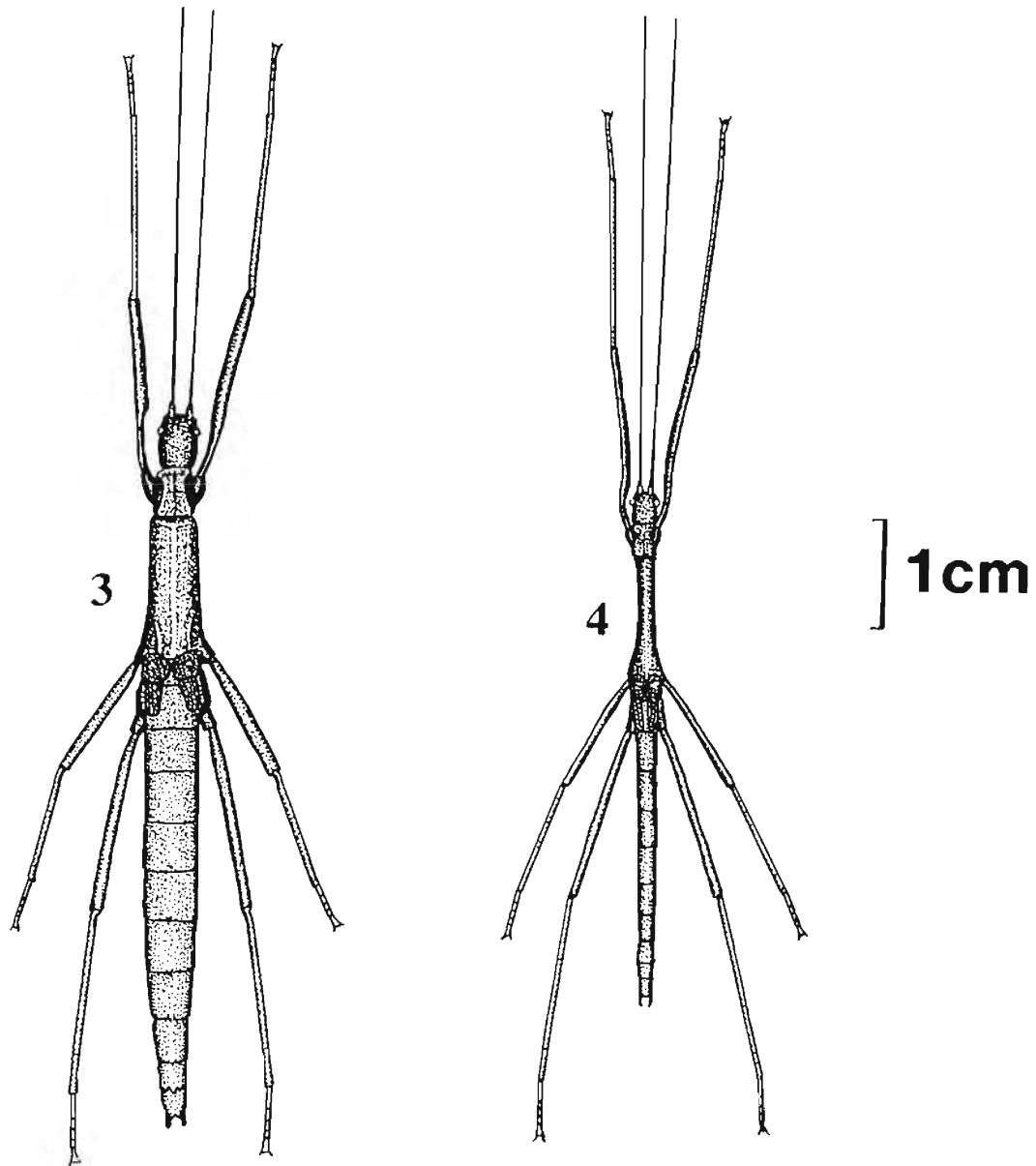
SABAH, Kinabalu National Park, Silau-Silau trail. 1♀, 1♂ (FRCS) C.L. Chan & Poon, 26.ix.1992.

## **Other specimens**

During my visit to Sabah with Mark Bushell in July and August 2001, numerous specimens of this species were found at Sepilok, Babaggon and at Kinabalu National Park. However, I did not collect any specimens from localities from which I had previously (Bragg, 2001) recorded this species. Mark Bushell recorded the numbers of specimens seen while we were collecting and also collected a number to attempt to rear them.



Figures 1 & 2. *Asceles margaritatus*, macropterous form. 1. Female, 2. male.



Figures 3-4. *Asceles margaritatus*, micropterous form. 3. Female, 4. male.

#### Acknowledgements

I thank Dr Chey Vun Khen and Dr Arthur Y.C. Chung for kindly providing access to the FRCS collection.

#### References

- Bragg, P.E. (1995) The distribution of *Asceles margaritatus* in Borneo. *Phasmid Studies*, 3(2): 39-40.  
Bragg, P.E. (2001) *Phasmids of Borneo*. Natural History Publications (Borneo), Kota Kinabalu.  
Hausleithner, B. (1991) Eine Phasmidenausbeute aus dem Gebiet des Mount Kinabalu, Borneo (Phasmatodea). *Nachrichten des Entomologischen Vereins Apollo, Frankfurt*, N.F. 11(4): 217-236.  
Redtenbacher, J. (1908) *Die Insektenfamilie der Phasmiden*. Volume 3. Leipzig.  
Sellick, J. (1993) The leaf-piercing eggs of *Asceles*. *Phasmid Studies*, 2(2): 54-55.